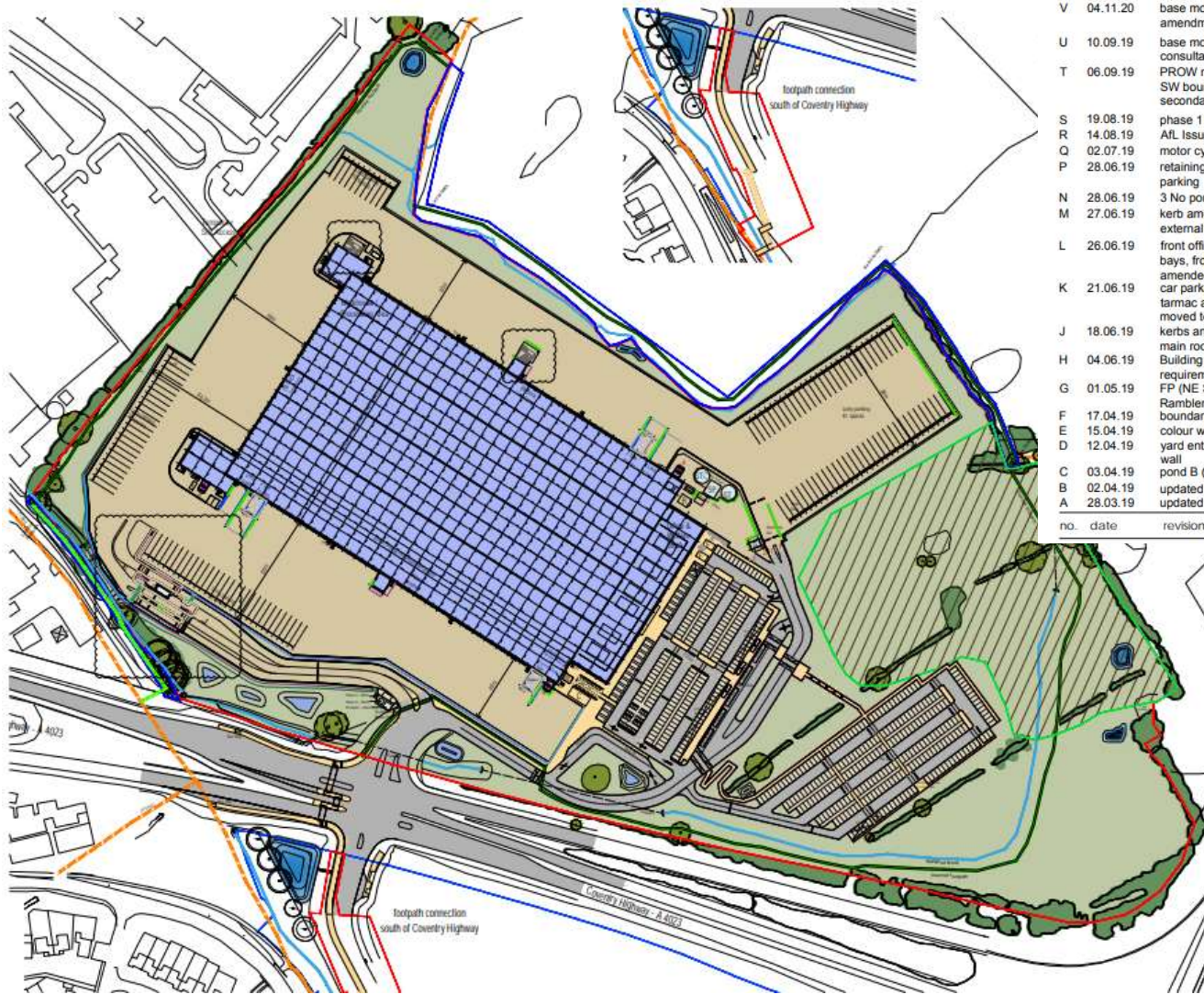


20/01275/S73

- Variation of condition 1 of planning permission 19/00619/REM to facilitate minor material amendments to approved drwg 6290 101 rev U to rev Y including –
- 1 - Main Gatehouse - change to approved 2 inbound inspection lanes , to provide single inbound inspection lane and an express lane and the inclusion of a kerbed island between the inbound lanes with a small security hut.
- 2 - provision of additional air handling equipment (to the north side of the wc pod), and the truckers lounge (west side of the building) and consequential relocation of the smoking shelter to the east.

Recommendation: Approve

SITE LOCATION PLAN



Y	28.05.21	express lane added to main gatehouse changes to gate locations. additional external plant added	ans
X	28.05.21	south site footpath link updated	ans
W	11.12.20	2 parking bays relocated to top car park	ans
V	04.11.20	base model updated to take account of amendments during construction	ans
U	10.09.19	base model updated following planning consultation comments	ans
T	06.09.19	PROW route to Ravensbank, rerouted along SW boundary of site, footpath link from secondary car park realigned	ans
S	19.08.19	phase 1 footpath to Winyates site removed	ans
R	14.08.19	AFL Issue	ans
Q	02.07.19	motor cycle shelters added	ans
P	28.06.19	retaining wall added back of NW corner truck parking	ans
N	28.06.19	3 No ponds in front of yard access amended	ans
M	27.06.19	kerb amendment to NW truckers lounge, external condensers added to truckers lounges	ans
L	26.06.19	front office relocated, canopies added to van bays, front parking adjusted, cycle parking amended	ans
K	21.06.19	car parking bays amended, break between tarmac and concrete on yard access road moved to county boundary	ans
J	18.06.19	kerbs amended around main gatehouse main roof orientation amended	ans
H	04.06.19	Building updated in line with revised client requirements	ans
G	01.05.19	FP (NE Site) amended following feedback from Ramblers	ans
F	17.04.19	boundary amended	ans
E	15.04.19	colour washes adjusted to suit revised layout	ans
D	12.04.19	yard entrance amended with adjusted retaining wall	ans
C	03.04.19	pond B (Gorcott Wood) added back	ans
B	02.04.19	updated following comments 190402	ans
A	28.03.19	updated following mtg 26.03.19	ans

no. date revision by

aja architects

1110 Mill Lane
1110 Mill Lane
Coventry Business Park
COVENTRY CV5 4LB

T 024 7653 2000
F 024 7653 2010
E. info@aja-architects.com
W. www.aja-architects.com

Stoford Gorcott Ltd.

Unit A, Gorcott
Redditch Gateway

Proposed Site Plan

1:500 (A1)

DATE: 28/03/2019

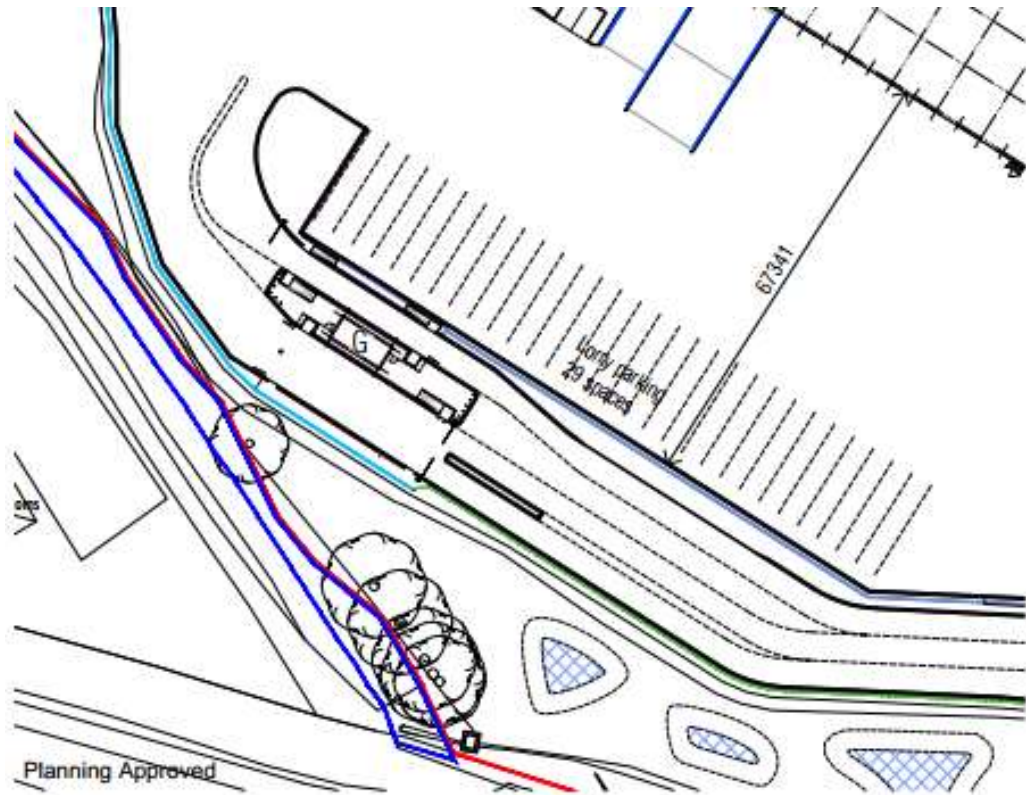
6290-101 Y

- Key
- Existing trees and hedging retained
 - Conservation Landscape Buffer Zone
 - Soft Landscape areas: see Potterton Associates for final arrangement
 - Footpaths: Tarmac finish
 - Roads: Tarmac finish
 - Yards: Concrete finish
 - Parking Bays: Concrete block finish
 - SUDs drainage ponds
 - Site Structures
 - S - Sub Station
 - T - Transformer
 - G - Gatehouse
 - F - Smoking Shelter
 - B - Bus Stop shelters
 - C - Cycle Shelters
 - W - Water meter and booster
 - N - Gas meter Governor
 - E - Electrical Generator
 - ST - Sprinkler Tank
 - SP - Sprinkler Pump House
 - R - Bin Store



SITE LOCATION

APPROVED



AMENDED (PROPOSED)





Overlay

Proposed layout overlaid over planning approved (green wash)

A	21.06.21	initial issue	ans
no.	date	revision	by



aja architects llp
 1170 Elliott Court
 Herald Avenue
 Coventry Business Park
 COVENTRY CV5 6UB
 T: 024 7625 3200
 F: 024 7625 3210
 E: aja@aja-architects.com
 W: www.aja-architects.com

aja architects llp is a limited liability partnership registered in England No. OC326721

client

Stoford Gorcott Ltd.

project

Unit A, Gorcott
 Redditch Gateway

drawing

Proposed Main Gatehouse
 Alterations

scale 1:500 @ A1 drawn ans

checked aips date June 2021

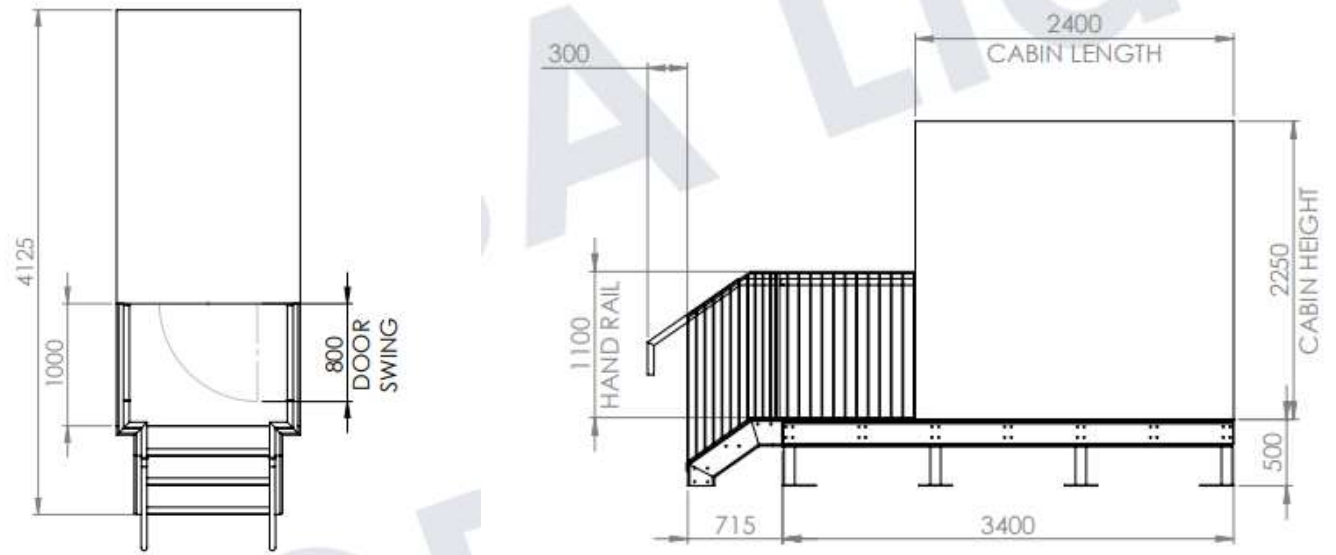
no

6290-118 A

Vesa shelter – Main gatehouse Express Lane

Visual of express lane shelter to main gatehouse.

Final colour light grey.



CONSTRUCTION NOTES

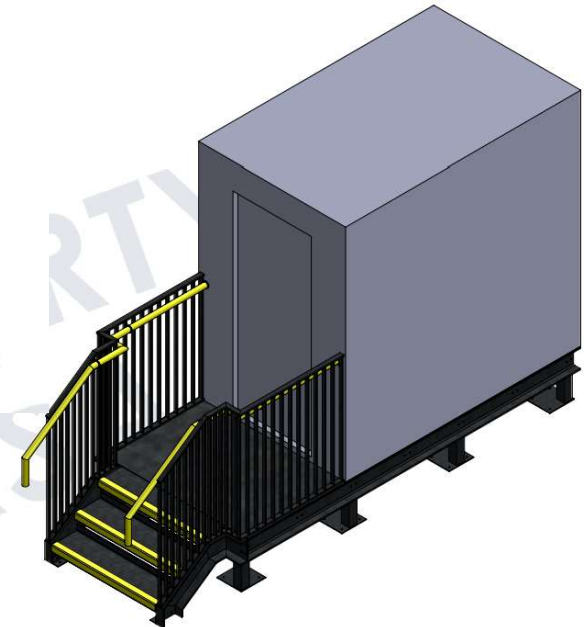
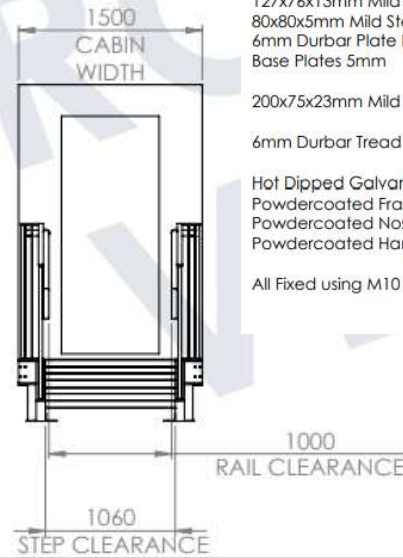
- 200x75x23mm Mild Steel PFC Outer Beams
- 127x76x13mm Mild Steel UB Support Beams
- 80x80x5mm Mild Steel SHS Posts
- 6mm Durbar Plate Platform
- Base Plates 5mm

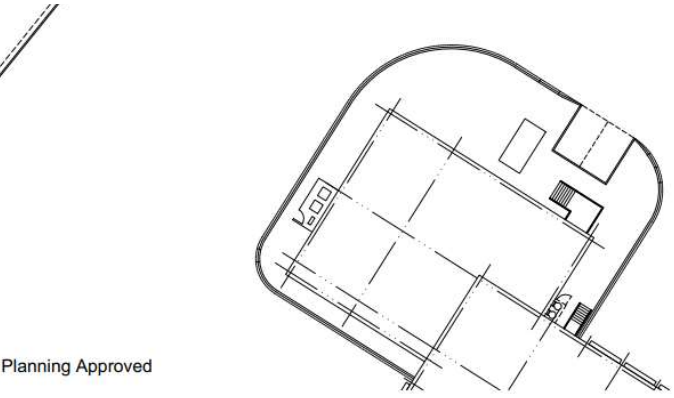
200x75x23mm Mild Steel PFC Stringers

6mm Durbar Tread Stair Plates

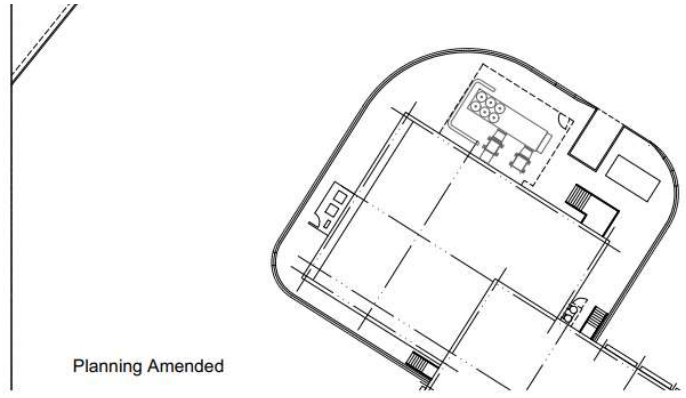
- Hot Dipped Galvanised Powdercoated Frame RAL7016 (Anthracite)
- Powdercoated Nosing RAL TBC (YELLOW)
- Powdercoated Hand Rails RAL TBC (YELLOW)

All Fixed using M10 & M12 Bolts, Washers & Nyloc Nuts

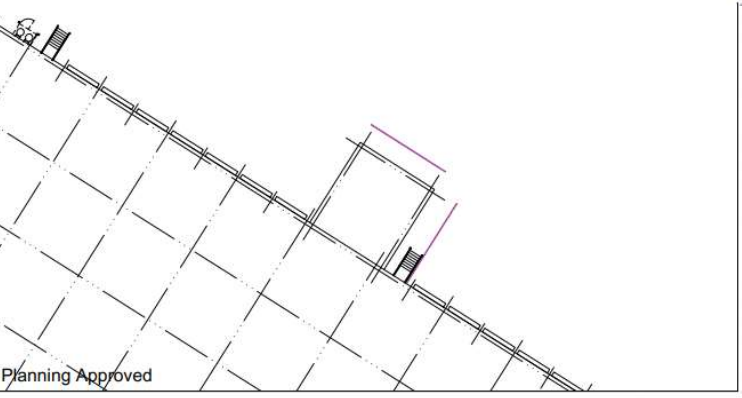




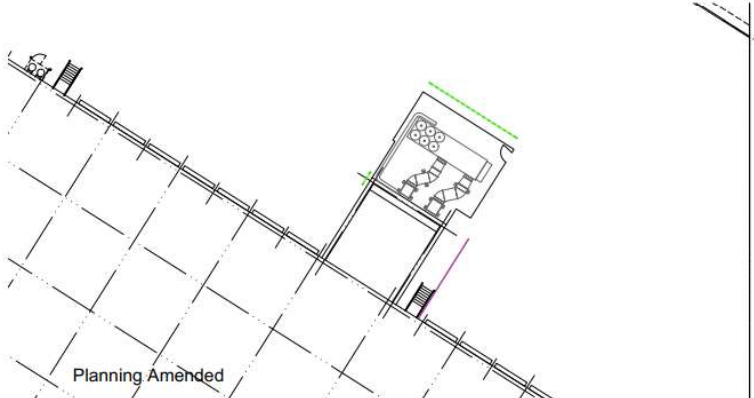
Planning Approved



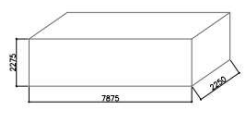
Planning Amended



Planning Approved



Planning Amended



ola dims of unit - raised on spacers from concrete finish min 200mm - to ensure units is level compared with falls on concrete



images of external AHU's

Proposals:
parking bay for maintenance vehicle reduced from 2 spaces to 1 space.
smoking shelter relocated.
external plant and fenced compound added.

Proposals:
external plant and fenced compound added.

no.	date	revision	by
A	21.06.21	initial issue	ans



aja architects llp
1170 Elliott Court
Herald Avenue
Coventry Business Park
COVENTRY CV5 6JB
E: aja@aja-architects.com
W: www.aja-architects.com
T: 024 7625 3200
F: 024 7625 3210

aja architects llp is a limited liability partnership registered in England No. OC326721

client

Stoford Gorcott Ltd.

project

Unit A, Gorcott
Redditch Gateway

drawing

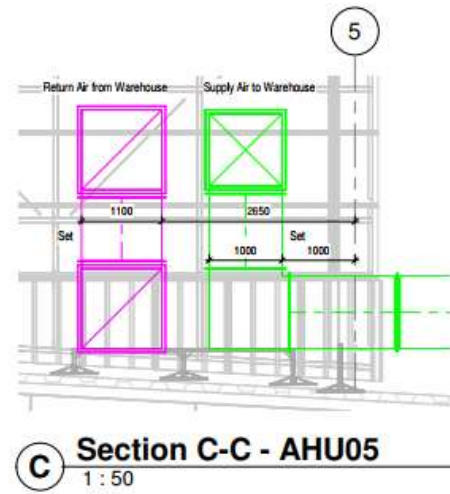
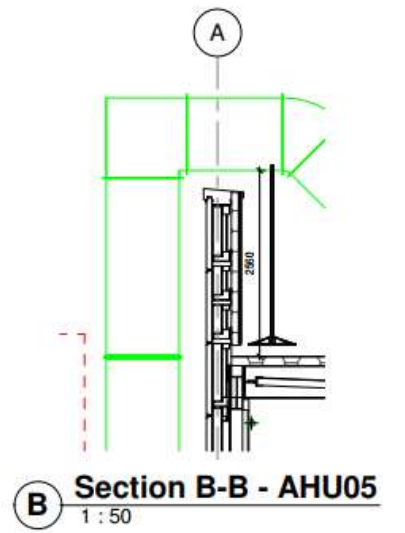
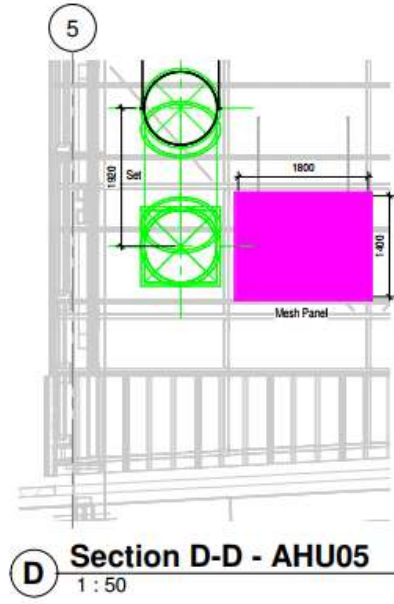
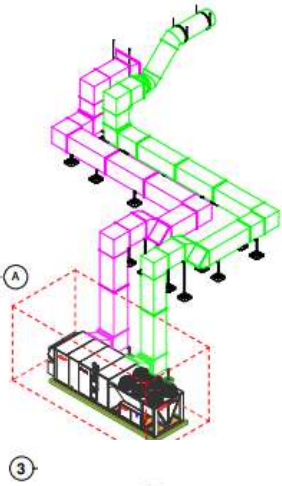
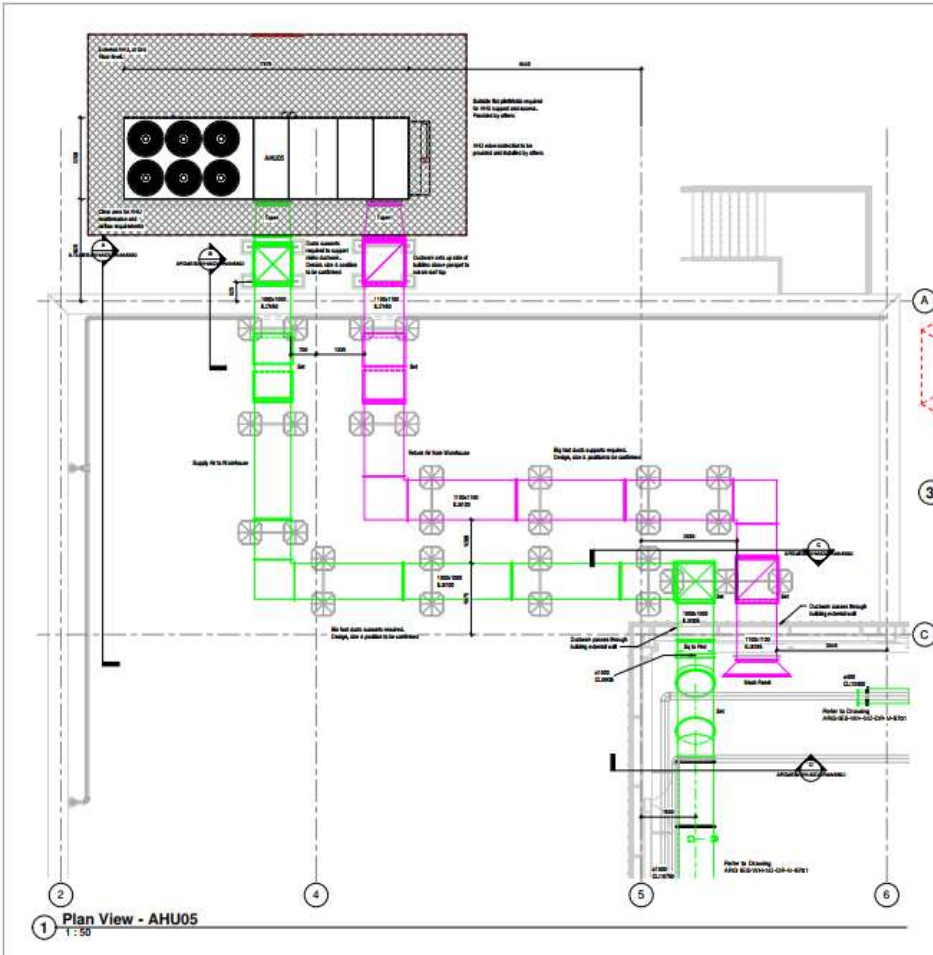
Proposed Main Gatehouse
Alterations

scale 1:250 @ A1 drawn ans

checked ajps date June 2021

no

6290-119 A



Mechanical Serices Low Level AHUs

Mechanical Services Low Level AHUs

